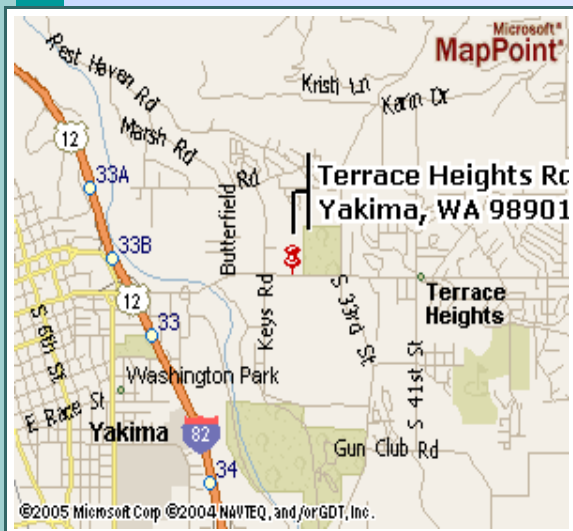


SCHUMACHER LEASING PRESENTS

## TERRACE HEIGHTS OFFICE SUITES



2812 Terrace Heights Dr, Yakima, WA. 98901



### BUILDING FEATURES

OFFICE and STORAGE FACILITY

- ✦ Deluxe Office Space, one with Heated Storage
- ✦ Next to new Terrace Heights Development
- ✦ Convenient Free Parking / Ground Floor Entry
- ✦ H/C Restroom / Coffee Bar
- ✦ Main Street Exposure / Utilities paid except Elec.
- ✦ Two Private Office Suites, Reception area, RR

**Suite # 4 750sf \$645.00 mo.**

For More Information Contact



PROPERTIES

PO BOX 949 MUKILTEO, WA. 98275  
[www.LeasingRealestate.com](http://www.LeasingRealestate.com)



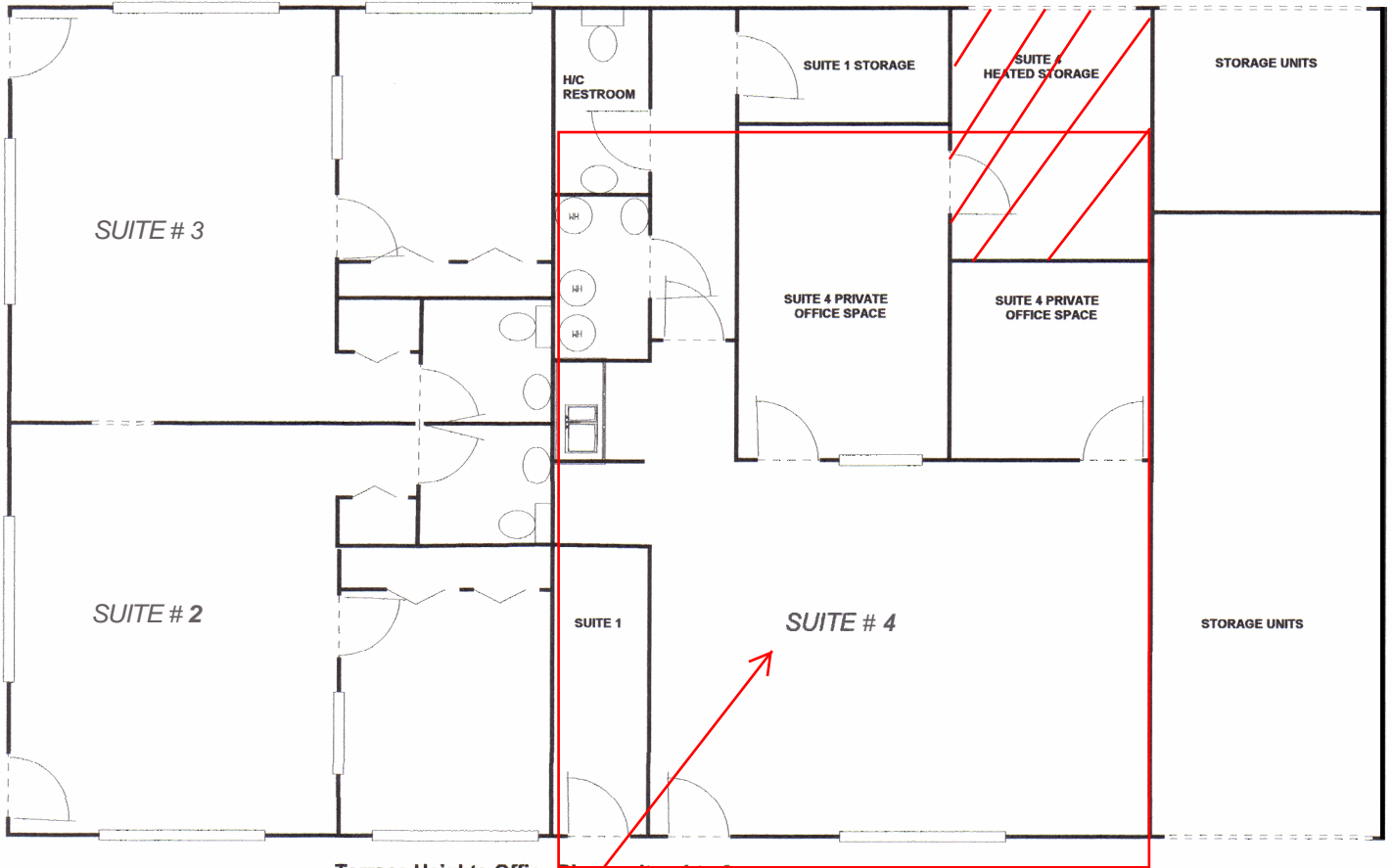
JIM SCHUMACHER

E-Mail [Jim@LeasingRealestate.com](mailto:Jim@LeasingRealestate.com)

Yakima Ph 509-248-2000 Fax 509-248-1050  
Seattle Ph 206-715-9000 Fax 425-710-9090



\* The Information contained herein has been obtained from sources deemed reliable but is not guaranteed.



Terrace Heights Office Plaza suites 1 to 9

SCHUMACHER LEASING 509-969-0000