

SCHUMACHER LEASING PRESENTS

SILVER LAKE PROFESSIONAL CENTER

1710 * 1720 100th PL. SE, Everett, WA. 98208 (Silver Lake Highway 527)



Silver Lake Professional Center



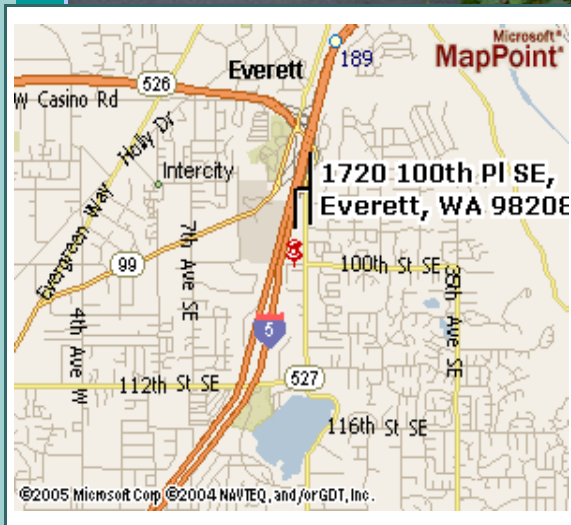
1720 Building



PROFESSIONAL SUITES



1710 Building



BUILDING FEATURES

Medical and General Office Space / Warehouse Available

- ✦ Near Costco Everett I-5 Interchange
- ✦ Convenient Free Parking / Ground Floor Entry
- ✦ Excellent Value for Office Space
- ✦ Main Street Exposure on Bus Route
- ✦ Some Tenant Improvements Available
- ✦ Long Term Lease Discounts Available

1720 **340sf Office #201 \$545. mo.**
Utilities and NNN Included

For More Information Contact



PROPERTIES

PO BOX 949 MUKILTEO, WA. 98275
www.LeasingRealestate.com



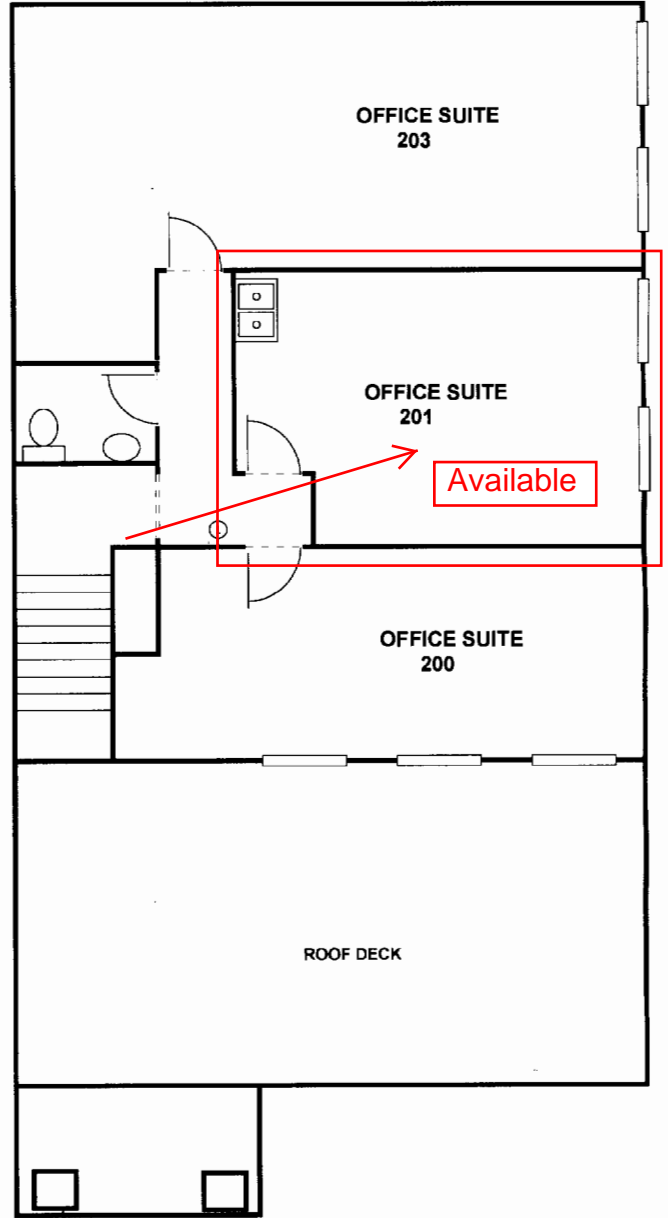
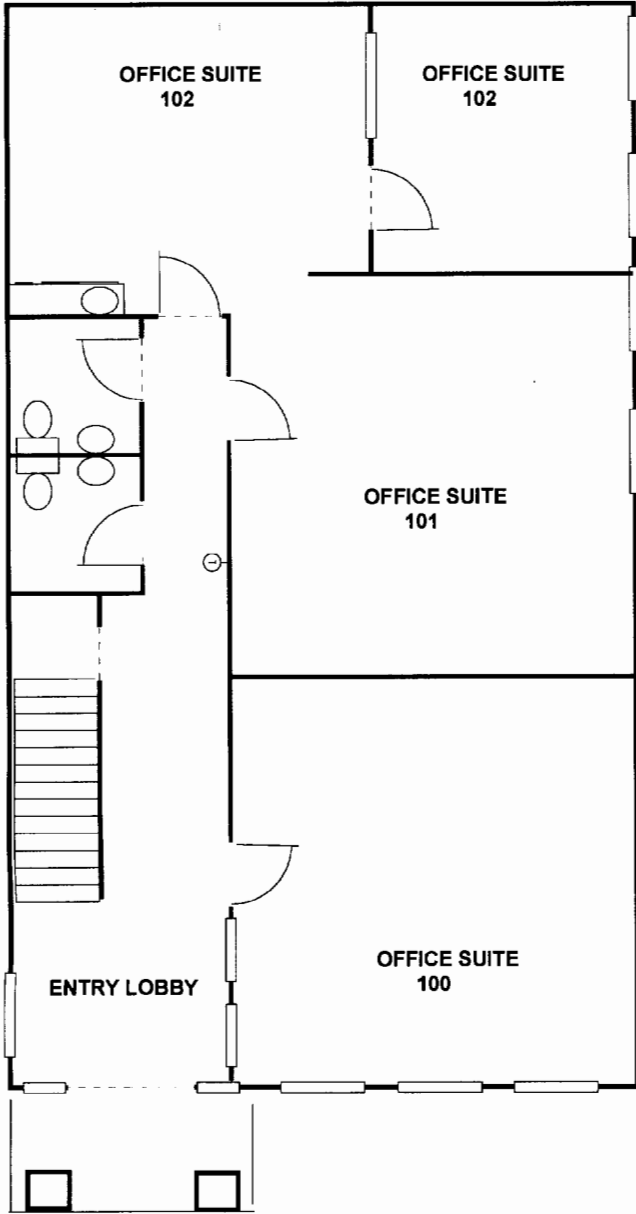
JIM SCHUMACHER

E-Mail Jim@LeasingRealestate.com

Phone 206-715-9000 Fax 425-710-9090



* The Information contained herein has been obtained from sources deemed reliable but is not guaranteed.



Directions: I-5 Traveling North from Lynnwood
Take At exit 189, turn RIGHT onto Ramp towards WA-526 / WA-527
Keep RIGHT to stay on Ramp towards WA-527 / 19th Ave. S.E.
Then Turn RIGHT (South) onto SR-527 [19th Ave SE] traveling South
Intersection 19th Ave SE. 100th PI SE Turn RIGHT (West) onto 100th PI SE
End of Street White Buildings with Black Awnings

Directions: From I-5 Traveling South from Smokey Point / Arlington
Take I-5 At exit 189, turn RIGHT onto Ramp towards Everett Mall Way / WA-527
Keep RIGHT to stay on Ramp towards Broadway / WA-527 S / 19th Ave SE
Bear RIGHT (North) onto S Broadway [SE Everett Mall Way]
Keep RIGHT onto Local road(s)
Bear RIGHT (South-East) onto SR-527 [19th Ave SE] traveling South
Intersection 19th Ave SE. 100th PI SE Turn RIGHT (West) onto 100th PI SE
End of Street White Buildings with Black Awnings